

1

2

3

4

A

A

B

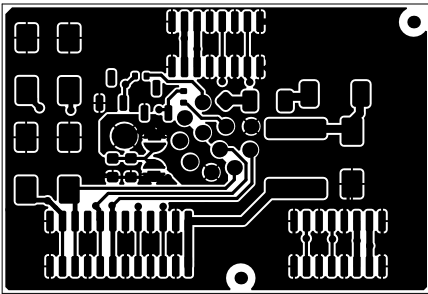
B

C

C

D

D



Kronotech Srl Via Adriatica 284 33030 – Campoformido (UD) Italy		
TITLE: TITLE      Top Layer		
SIZE: A4	DWG NO: TITLE	REV: 0
SCALE: 1:1	DO NOT SCALE DRAWING	DATE: 09/05/2024

1

2

3

4

1

2

3

4

A

A

B

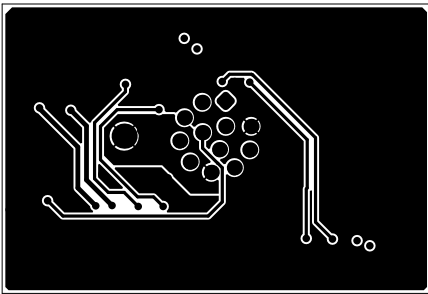
B

C

C

D

D



Kronotech Srl Via Adriatica 284 33030 – Campoformido (UD) Italy		
TITLE: TITLE <b>Bottom Layer</b>		
SIZE: A4	DWG NO: TITLE	REV: 0
SCALE: 1:1	DO NOT SCALE DRAWING	DATE: 09/05/2024

1

2

3

4

1

2

3

4

A

A

B

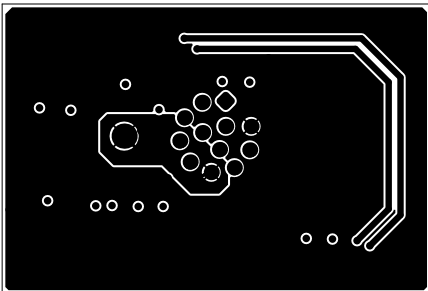
B

C

C

D

D



Kronotech Srl Via Adriatica 284 33030 – Campoformido (UD) Italy		
TITLE: TITLE      Mid-Layer 1		
SIZE: A4	DWG NO: TITLE	REV: 0
SCALE: 1:1	DO NOT SCALE DRAWING	DATE: 09/05/2024

1

2

3

4

1

2

3

4

A

A

B

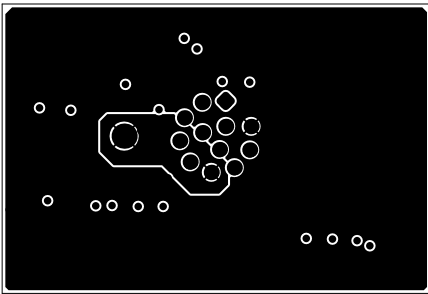
B

C

C

D

D



Kronotech Srl Via Adriatica 284 33030 – Campoformido (UD) Italy		
TITLE: TITLE <b>Mid-Layer 2</b>		
SIZE: A4	DWG NO: TITLE	REV: 0
SCALE: 1:1	DO NOT SCALE DRAWING	DATE: 09/05/2024

1

2

3

4

1

2

3

4

A

A

B

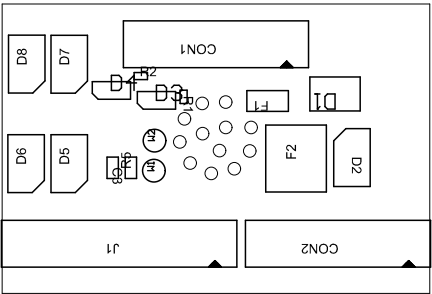
B

C

C

D

D



Kronotech Srl Via Adriatica 284 33030 – Campoformido (UD) Italy		
TITLE: TITLE      Top Assembly		
SIZE: A4	DWG NO: TITLE	REV: 0
SCALE: 1:1	DO NOT SCALE DRAWING	DATE: 09/05/2024

1

2

3

4

1

2

3

4

A

A

B

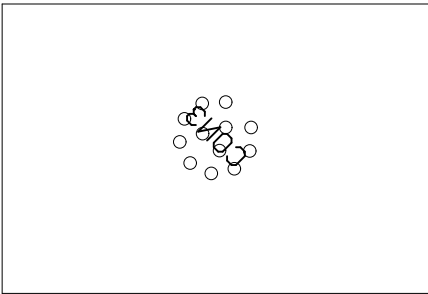
B

C

C

D

D



Kronotech Srl Via Adriatica 284 33030 – Campoformido (UD) Italy		
TITLE: TITLE <b>Bottom Assembly</b>		
SIZE: A4	DWG NO: TITLE	REV: 0
SCALE: 1:1	DO NOT SCALE DRAWING	DATE: 09/05/2024

1

2

3

4

1

2

3

4

A

A

B

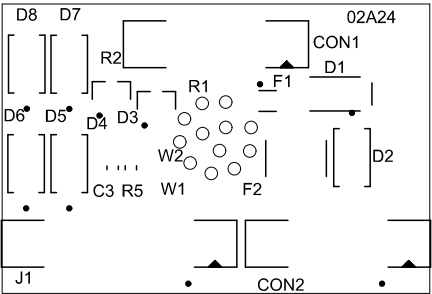
B

C

C

D

D



Kronotech Srl Via Adriatica 284 33030 – Campoformido (UD) Italy		
TITLE: TITLE      Top Overlay		
SIZE: A4	DWG NO: TITLE	REV: 0
SCALE: 1:1	DO NOT SCALE DRAWING	DATE: 09/05/2024

1

2

3

4

1

2

3

4

A

A

B

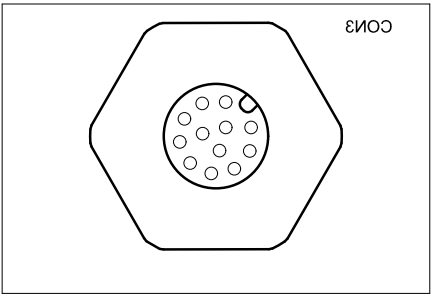
B

C

C

D

D



Kronotech Srl Via Adriatica 284 33030 – Campoformido (UD) Italy		
TITLE: TITLE      Bottom Overlay		
SIZE: A4	DWG NO: TITLE	REV: 0
SCALE: 1:1	DO NOT SCALE DRAWING	DATE: 09/05/2024

1

2

3

4



1

2

3

4

A

A

B

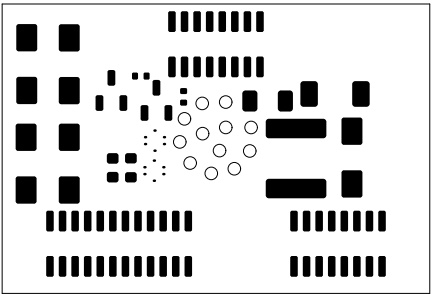
B

C

C

D

D



Kronotech Srl Via Adriatica 284 33030 – Campoformido (UD) Italy		
TITLE: TITLE      Top Paste		
SIZE: A4	DWG NO: TITLE	REV: 0
SCALE: 1:1	DO NOT SCALE DRAWING	DATE: 09/05/2024

1

2

3

4

1

2

3

4

A

A

B

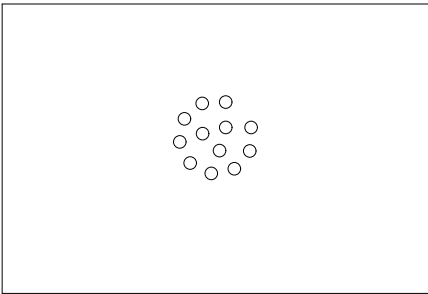
B

C

C

D

D



Kronotech Srl Via Adriatica 284 33030 – Campoformido (UD) Italy		
TITLE: TITLE <b>Bottom Paste</b>		
SIZE: A4	DWG NO: TITLE	REV: 0
SCALE: 1:1	DO NOT SCALE DRAWING	DATE: 09/05/2024

1

2

3

4

1

2

3

4

A

A

B

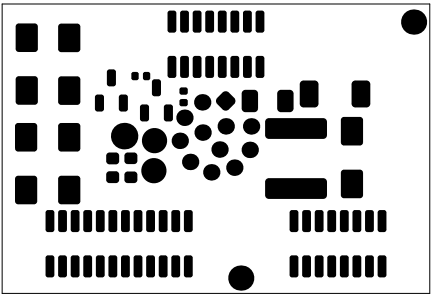
B

C

C

D

D



Kronotech Srl Via Adriatica 284 33030 – Campoformido (UD) Italy		
TITLE: TITLE      Top Solder		
SIZE: A4	DWG NO: TITLE	REV: 0
SCALE: 1:1	DO NOT SCALE DRAWING	DATE: 09/05/2024

1

2

3

4

1

2

3

4

A

A

B

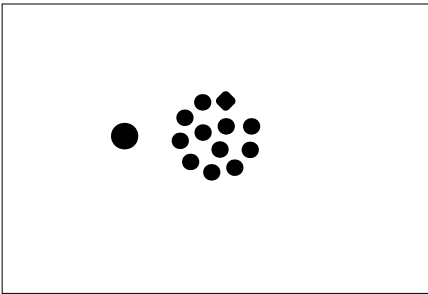
B

C

C

D

D



Kronotech Srl Via Adriatica 284 33030 – Campoformido (UD) Italy		
TITLE: TITLE      Bottom Solder		
SIZE: A4	DWG NO: TITLE	REV: 0
SCALE: 1:1	DO NOT SCALE DRAWING	DATE: 09/05/2024

1

2

3

4

1

2

3

4

A

A

B

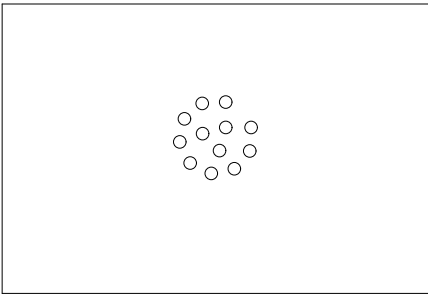
B

C

C

D

D



Kronotech Srl Via Adriatica 284 33030 – Campoformido (UD) Italy		
TITLE: TITLE <b>Board Outline</b>		
SIZE: A4	DWG NO: TITLE	REV: 0
SCALE: 1:1	DO NOT SCALE DRAWING	DATE: 09/05/2024

1

2

3

4

1

2

3

4

A

A

B

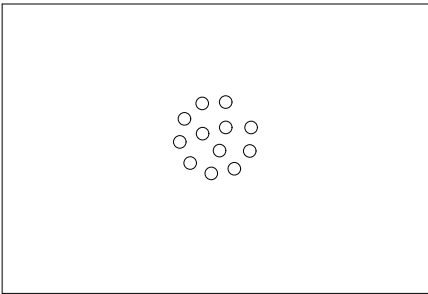
B

C

C

D

D



Kronotech Srl Via Adriatica 284 33030 – Campoformido (UD) Italy		
TITLE: TITLE      Dimensions		
SIZE: A4	DWG NO: TITLE	REV: 0
SCALE: 1:1	DO NOT SCALE DRAWING	DATE: 09/05/2024

1

2

3

4

1

2

3

4

A

A

B

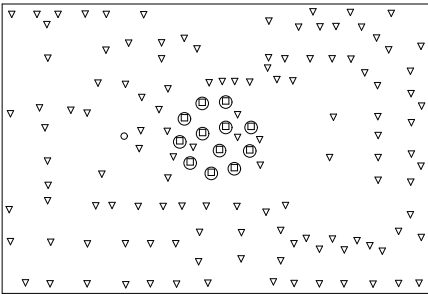
B

C

C

D

D



Symbol	Count	Hole Size	Plated	Hole Type	Drill Layer Pair	Via/Pad	Pad Shape
○	1	1.20mm (47.24mil)	PTH	Round	Top Layer - Bottom Layer	Pad	Rounded
□	12	0.80mm (31.50mil)	PTH	Round	Top Layer - Bottom Layer	Pad	(Mied)
▽	123	0.30mm (11.81mil)	PTH	Round	Top Layer - Bottom Layer	Via	Rounded
	136 Total						

Kronotech Srl Via Adriatica 284 33030 – Campoformido (UD) Italy		
TITLE: TITLE <b>Drill Drawing</b>		
SIZE: A4	DWG NO: TITLE	REV: 0
SCALE: 1:1	DO NOT SCALE DRAWING	DATE: 09/05/2024

1

2

3

4

A

B

C

D

A

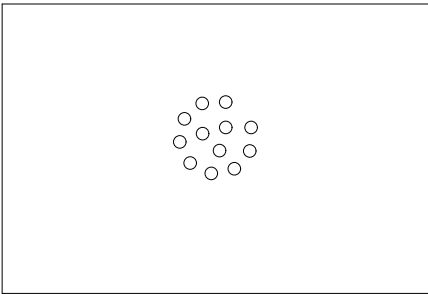
B

C

D

Gerber Files:  
\*.GTO - Top Overlay  
\*.GTP - Top Paste  
\*.GTS - Top Solder  
\*.GTL - L1 (Signal Layer)  
\*.G1 - L2 (Signal Layer)  
\*.G2 - L3 (Signal Layer)  
\*.GBL - L4 (Signal Layer)  
\*.GBS - Bottom Solder  
\*.GBP - Bottom Paste  
\*.GB0 - Bottom Overlay  
\*.GM1 - Board Outline  
\*.GM5 - Top Assembly  
\*.GM6 - Bottom Assembly  
\*.GD1 - Drill Drawing

Drill Files:  
\*.TXT - NC Drill  
\*.DRR - NC Drill Report



Board Info  
Minimum Track: 150um  
Minimum Gap: 150um  
  
1. FINISHED PANEL THICKNESS TO BE 1.60mm  
2. BOARD MATERIAL: ITEQ IT-158  
3. BOARD FINISH: HAL Lead Free  
4. SOLDER RESIST: APPLY TO BOTH SIDES COLOUR - Green  
5. COMPONENT IDENT: COLOUR TO BE WHITE  
6. TOLERANCES: BOARD THICKNESS: +/- 10%

Layer	Name	Material	Thickness	Constant	Board Layer Stack
	Top Overlay				
	Top Solder	SM-001	0.025mm	4	
1	Top Layer	CF-004	0.035mm		
	Dielectric 1	PP-016	0.117mm	4.4	
	Dielectric 2	PP-016	0.117mm	4.4	
2	Mid-Layer 1	CF-004	0.035mm		
	Dielectric3	Core-042	0.991mm	4.6	
3	Mid-Layer 2	CF-004	0.035mm		
	Dielectric 4	PP-016	0.117mm	4.4	
	Dielectric 5	PP-016	0.117mm	4.4	
4	Bottom Layer	CF-004	0.035mm		
	Bottom Solder	SM-001	0.025mm	4	
	Bottom Overlay				

Total board thickness: 1.649mm

Kronotech Srl Via Adriatica 284 33030 – Campoformido (UD) Italy		
TITLE: TITLE Fab Notes		
SIZE: A4	DWG NO: TITLE	REV: 0
SCALE: 1:1	DO NOT SCALE DRAWING	DATE: 09/05/2024